

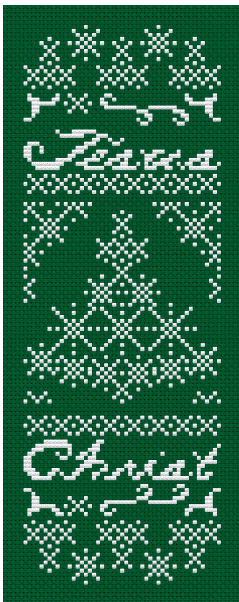
*Snowflake Trees*



LINEN FLOWERS

# Snowflake Trees

Sampler-style Snowflake Trees, stitched in any color floss, on any fabrics in your stash, make nice additions to holiday stitching! The Snowflake Tree Bellpull features the Savior's Name, "Jesus Christ," and is 49 w x 139 h. The Snowflake Tree Pillow Front is a smaller stitch, at 49 w x 61 h, and would look stunning with quilt fabrics surrounding it, on a pillow. The quickest stitch, The Snowflake Tree Mini Ornament, has a design size of 37 w x 44 h, and would make a fast, fun stitch for advanced and beginner stitchers, alike.



The Snowflake Tree Bellpull

Design Size: 49 w x 139 h.

Use 2 strands over 2 threads for all regular stitches.

Use a Fabric Calculator to determine finished size on your favorite fabric.

DMC Symbol Chart Below. (Or use any Floss Shade that you desire)

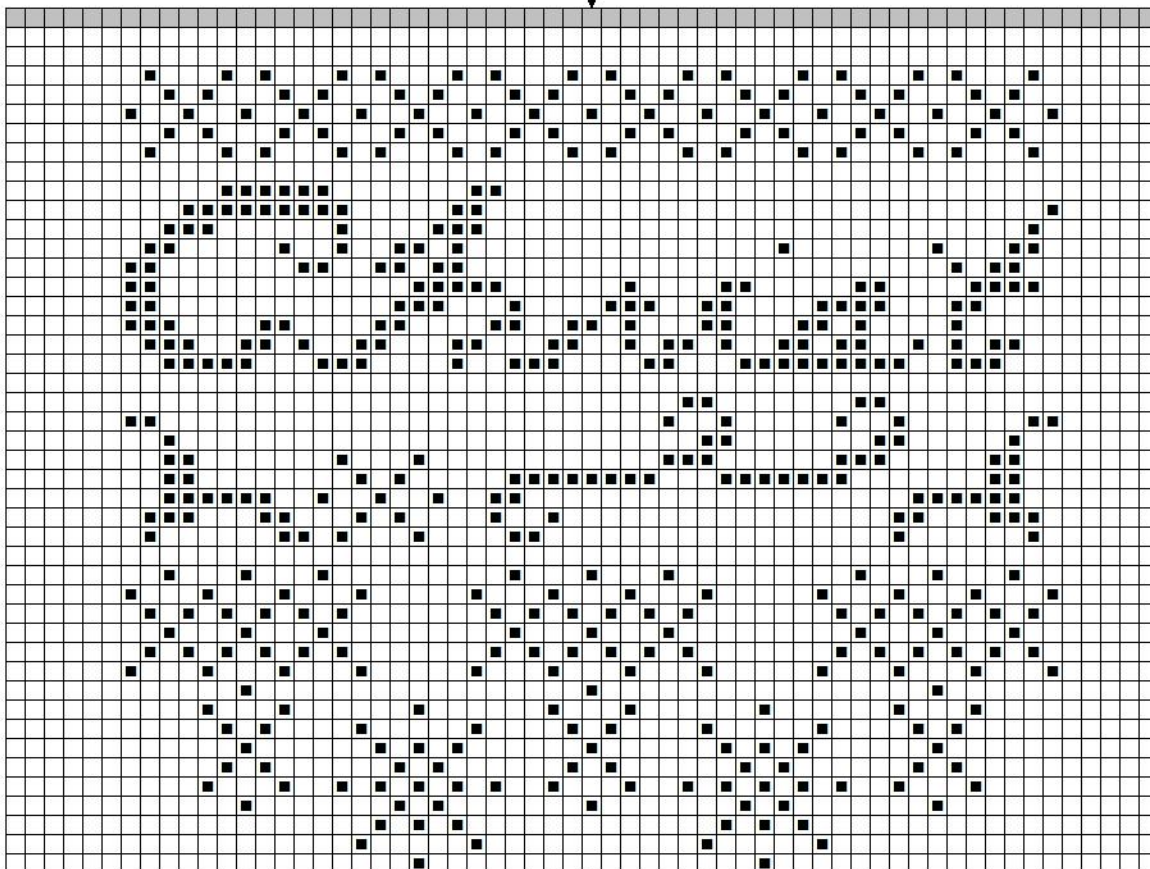
Note: Charts overlap by one square.

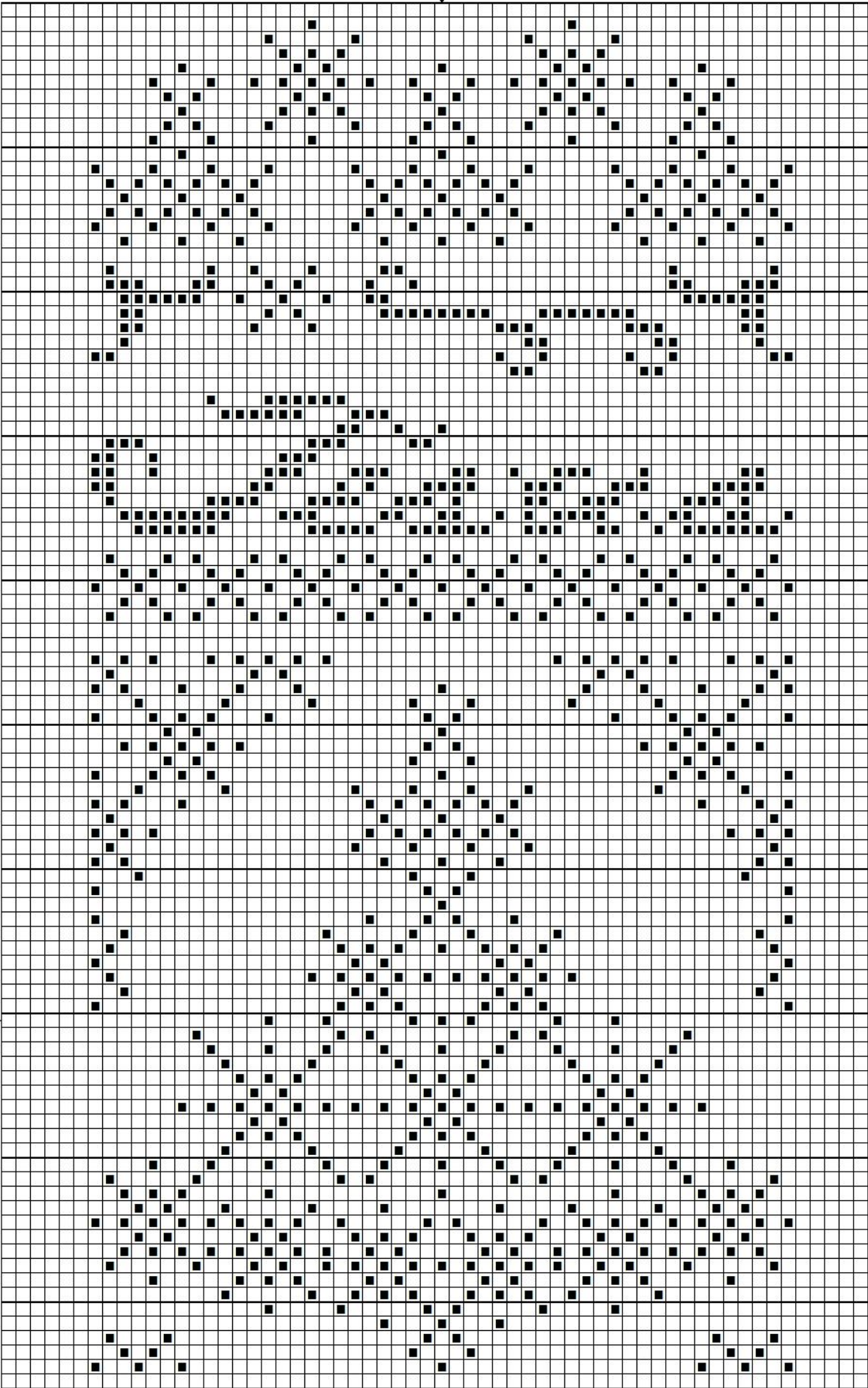
■ B5200 Bright white



LINEN FLOWERS

(Bottom Chart, Below)

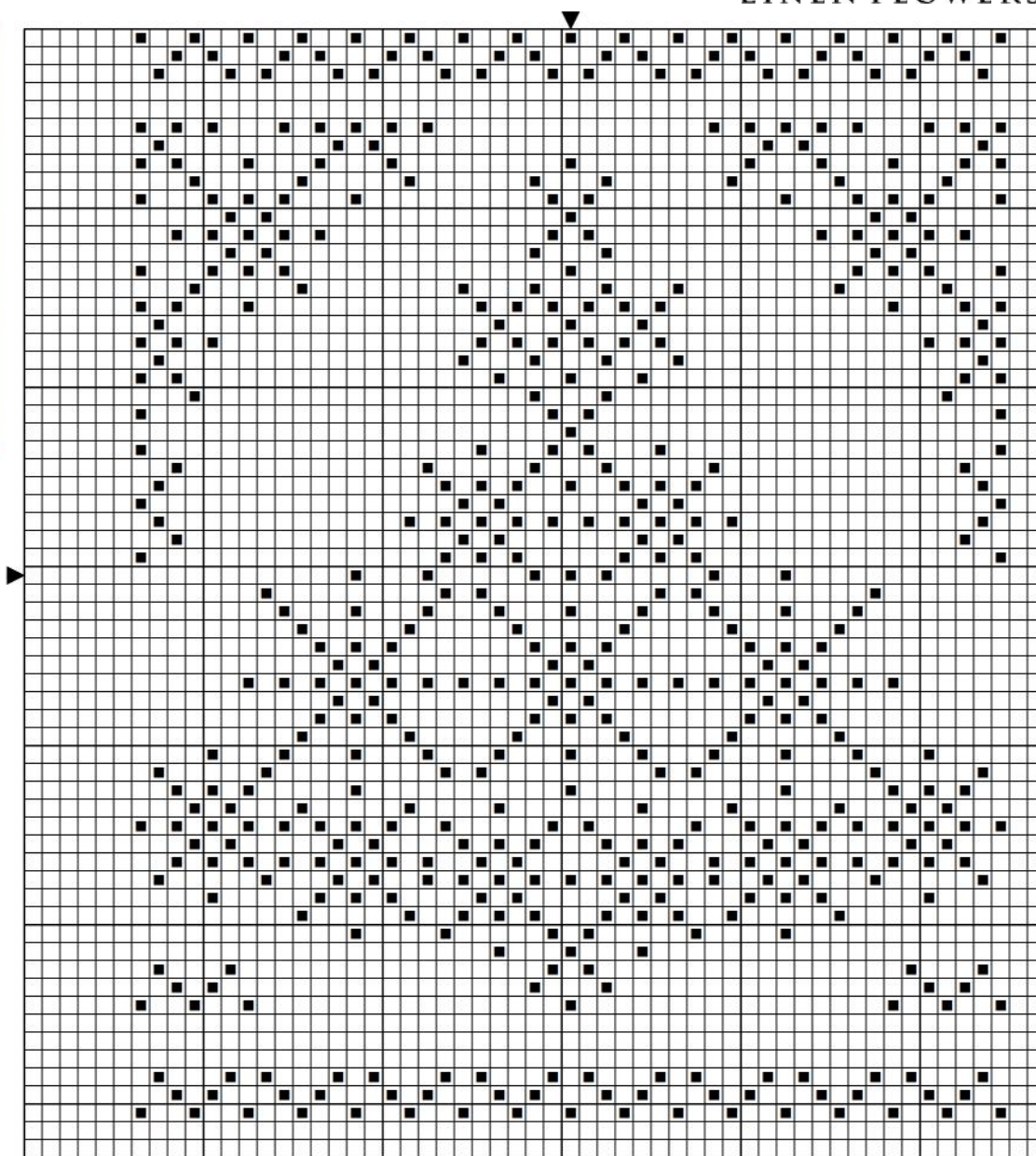


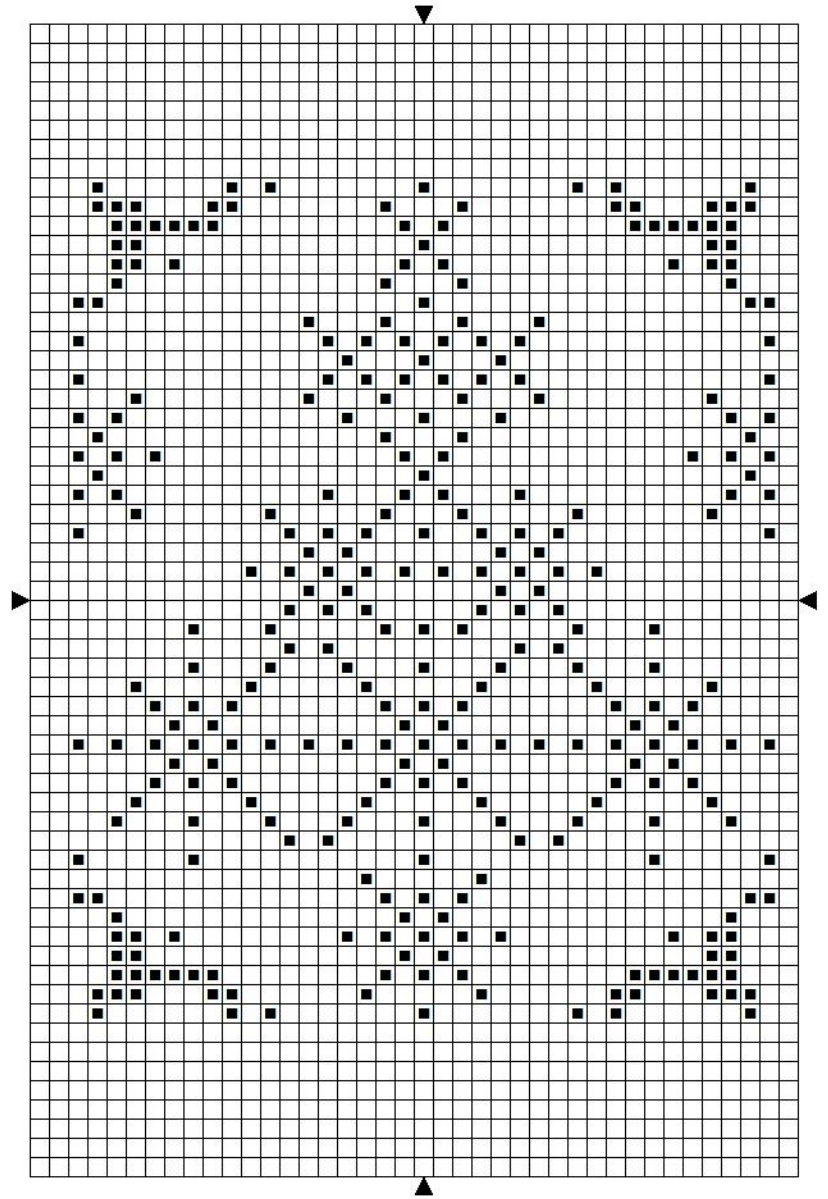
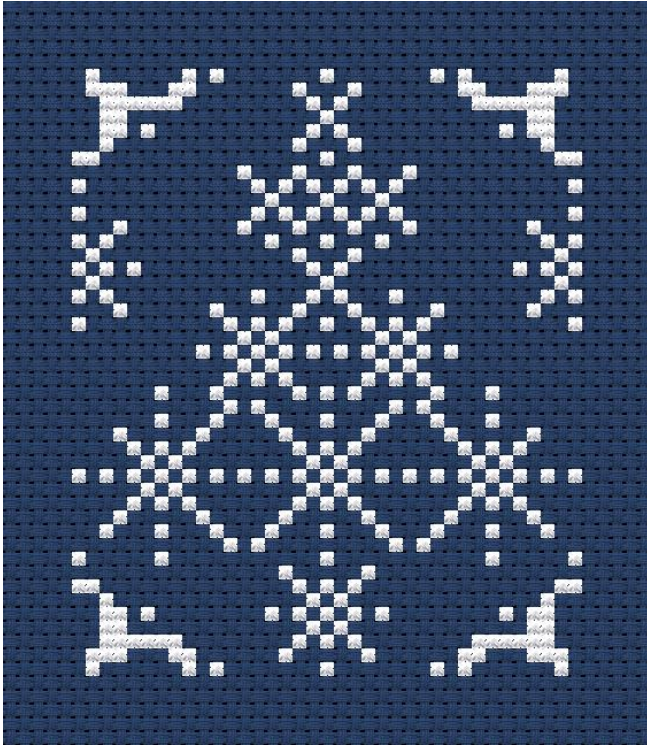




The Snowflake Tree  
Pillow Front  
Design Size:  
49 w x 61 h.  
Use 2 strands over 2  
threads for all regular  
stitches.  
Use a Fabric Calculator  
to determine finished  
size on your favorite  
fabric.  
DMC Symbol Chart  
Below. (Or use any  
Floss Shade that you  
desire).

■ B5200 Bright white





The Snowflake Tree Mini Ornament  
Design Size: 37 w x 44 h.  
Use 2 strands over 2 threads for all  
regular stitches.  
Use a Fabric Calculator to determine  
finished size on your favorite fabric.  
DMC Symbol Chart Below.  
(Or use any Floss Shade that you desire)

■ B5200 Bright white