



Shades Of Violet Needlework Set
Complimentary Design



LINEN FLOWERS



Design sizes:

Pinkeep: 43 w x 42 h.

Finished size: 3 1/4" square.

Scissorkeep: 35 w x 52 h.

Finished size: 2 3/4" w x 3 1/2" h.

Both projects stitched on 25 ct. Jobelan using DMC Floss.

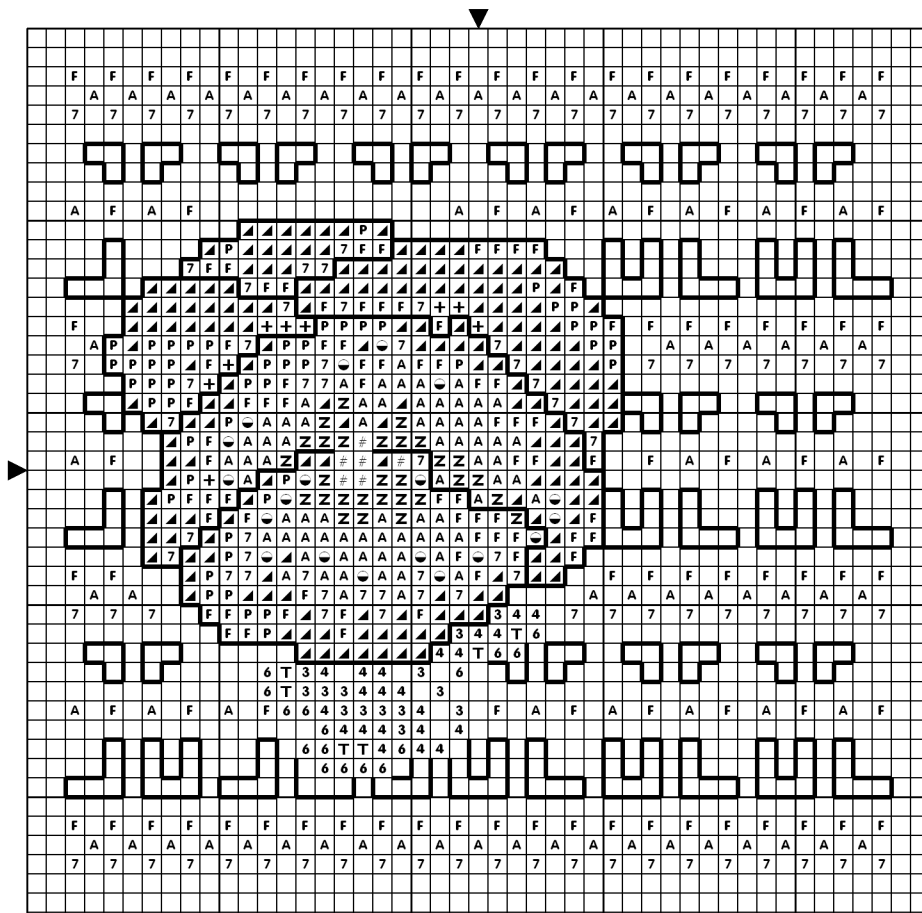
Design size of Single Pansy: 27 w x 29 h.

Use 2 strands over 2 threads for regular stitches, and one strand for Backstitching.

Backstitch colors: Letters, Border, and Motifs: 552. Pansies: 553.

(5) strands twisted 553 for Cording around seams.

Pinkeep Chart

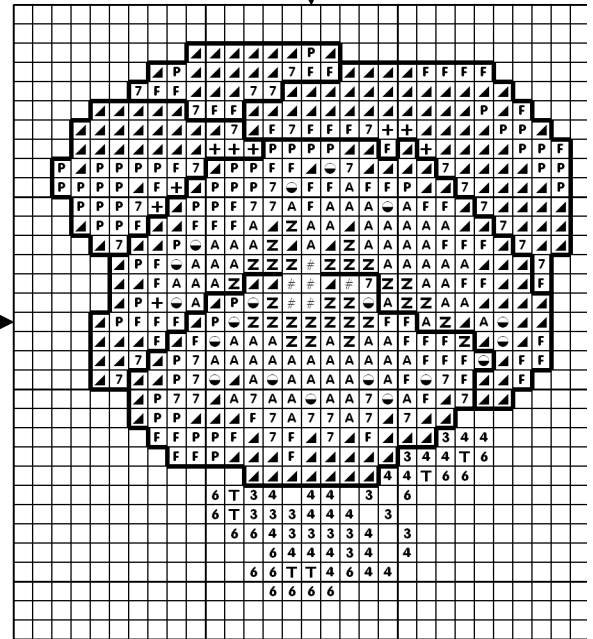
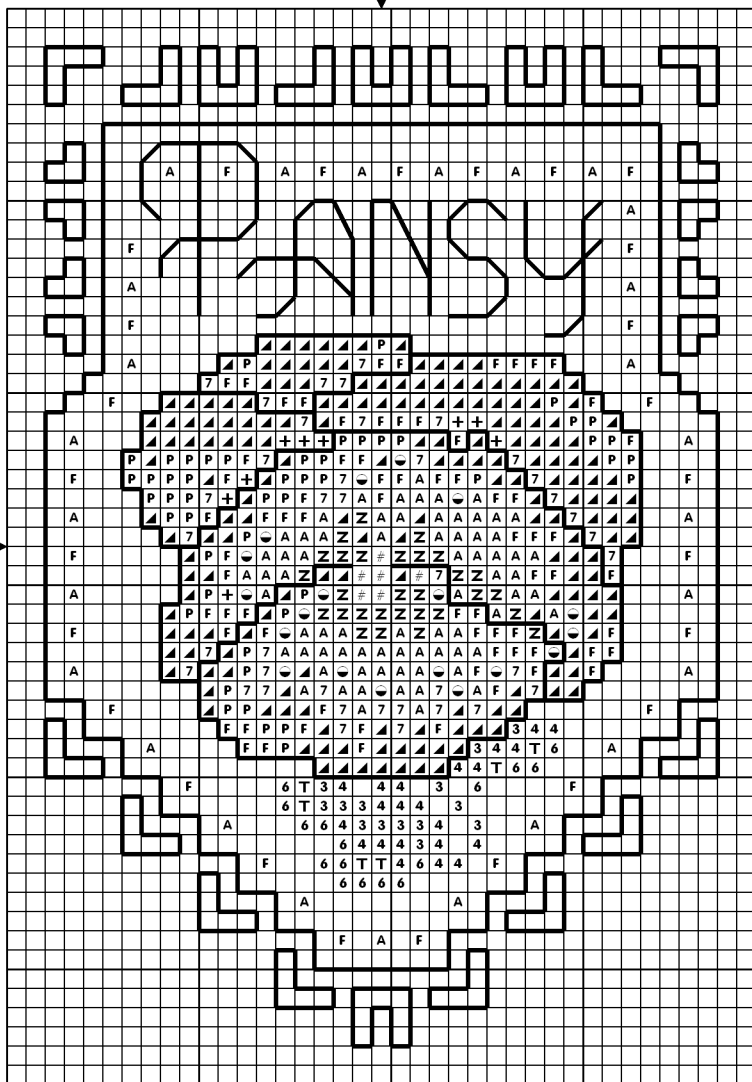


DMC Symbol Chart

Sym	No.	Colour Name	Sym	No.	Colour Name
▲	5200	B Bright white	#	725	Sunlight yellow
Z	550	: Blackcurrant	A	553	Amethyst violet
●	554	Pastel violet	7	153	Lilac rose
P	3756	Cloud blue	F	211	Pale violet
+	3743	Pale lilac	3	581	: Grasshopper green
4	906	: Apple green	6	3348	: Lettuce heart green
T	471	: Tarragon green			

Scissorkeep Chart

Single Pansy Chart



Finishing:

Scissorkeep With Lining:

Trace Scissorkeep Template (Page 3) on paper and cut out template. Center over finished scissorkeep cross stitch, and cut fabric evenly. Place template over pressed, cotton fabric (to match). Cut out one backing piece and 2 lining pieces.

With right sides together, using 1/4" seams, sew scissorkeep cross stitch to backing piece, around curved edges. (Do not sew straight edges at top). Turn right side out.

Sew lining pieces, right side together, around curved edges, with 1/4" seams. (Do not sew straight edges at top). Do not turn right side out.

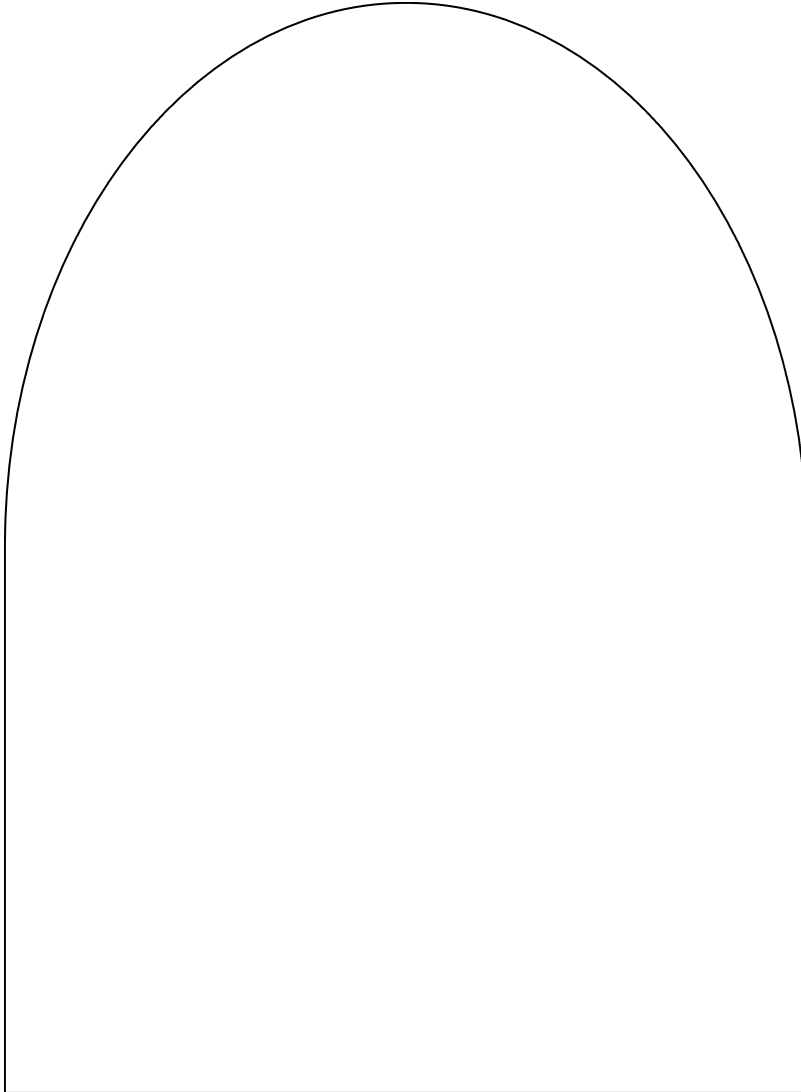
Fit the lining piece over the cross stitch piece (curves aligned), with right sides together and straight, raw edges aligned. Sew across top edge of both pieces (1/4" seam), leaving a turning length open on backing side of cross stitch piece.

Reach in and turn piece right side out. Handstitch the seam closed invisibly.

With invisible thread, topstitch (by hand) all around straight edge of scissorkeep, 1/4" from top edge.

See Pinkeep Finishing (Page 4) for directions on preparing the cording. Sew cording (beginning at top side of seam between finished cross stitch and backing) with ends under, then whipstitch around curve up to top side of seam.

Scissorkeep Template



Finishing Instructions for Pinkeep:

1. Cut (2) 4" pieces of Acid-Free Foam Core Board.
2. Cut (2-4) pieces of batting the same size and glue onto each. Let dry over-night. (Very important).
3. Center finished cross stitch over the padding of one square and glue edges to the back of the board. (You will need a little length to fit around to the back so be careful not to trim off too much excess fabric).
4. Center cotton fabric over the padding of the remaining square (again, with some overhang on the back), and glue edges to the back.
5. Let these dry several hours.
6. Place wrong side of boards together, with padding to the outside.
7. With invisible thread, whipstitch the boards together.
8. With DMC 553 (or color floss of choice), wind around pinkeep with a few extra inches. Cut. Cut 4 more pieces the same size.
9. Thread sewing needle with invisible thread. Fold floss under 1/2" and begin whipstitching to seam between boards at bottom of pinkeep. Sew completely around, twisting gently as you whipstitch around floss strands. At end, fold under 1/2" and overlap on beginning floss, whipstitching over frayed ends well. Knot well.





LINEN FLOWERS

Details:

Shades of Violet, Purple, and Lavender are beautiful when combined with Pansies in a lovely Needlework Set.

Pinkeep: 43 w x 42 h.

Finished size: 3 1/4" square.

Scissorkeep: 35 w x 52 h.

Finished size: 2 3/4" w x 3 1/2" h.

Both projects stitched on 25 ct. Jobelan using DMC Floss.

© 2010 Angie Kowalsky

Complimentary Design by Linen Flowers Designs <http://linenflowers.com>

Materials:

To stitch Shades Of Violet, you will need DMC Floss: 153, 211, 471, 550, 552, 553, 554, 581, 725, 906, 3348, 3743, 3756, 5200 (Bright White).

2 (4") squares Acid Free Foam Coreboard, Complimentary Cotton Fabric, Invisible Thread.

25 count White Jobelan or other fabric.

Linen Flowers:

Our natural themes in Cross Stitch Design are inspired by the beauty of God's handiwork. Please view our online catalog of more than 160 designs, perfect for the special moments in your life. Each chart is hand-drawn by Angie Kowalsky, using DMC Floss and mostly full stitches.

Our mission is to give God the glory for His beautiful creation.

Linen Flowers Designs
<http://linenflowers.com>