



*Long Journey Home*

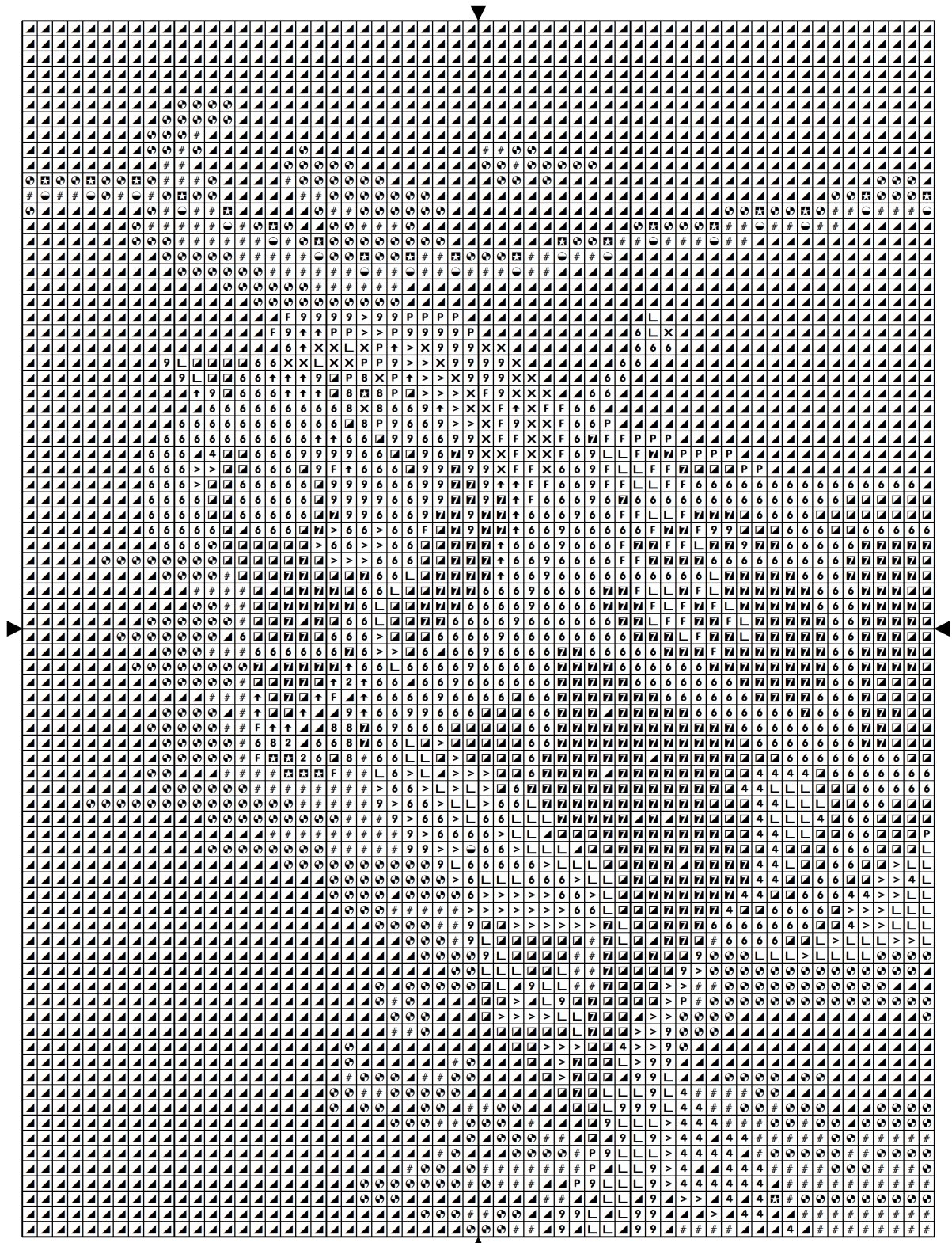
Design size: 60 w x 80 h.  
 Finished size: Approx.  
 Use 2 strands over 2  
 threads for all stitches.

Stitching option: If using  
 white fabric, you may  
 leave off the white  
 stitches of the  
 background.

DMC Symbol Chart  
 Below.



**LINEN FLOWERS**



Sym	No.	Colour Name	Sym	No.	Colour Name
▲	5200	B Bright white	P	3828	Oaktree brown
4	422	Light oak	■	842	Beige rope
↑	543	Shell beige	>	437	Camel
L	738	Sahara cream	9	739	Dune cream
8	712	Cream	6	611	Sisal brown
X	833	Brass	F	ECRUT	ECRUT
■	420	Hazelnut	■	436	Teddy brown
2	3866	Garlic cream	●	841	Deer brown
#	3753	: Moonlight blue	●	3756	: Cloud blue