

Little Penguin Ornament



Complimentary Pattern By Linen Flowers
© 2014 Angie Kowalsky
Website: <http://linenflowers.com>

L I N E N F L O W E R S



Design size: 38 w x 38 h.

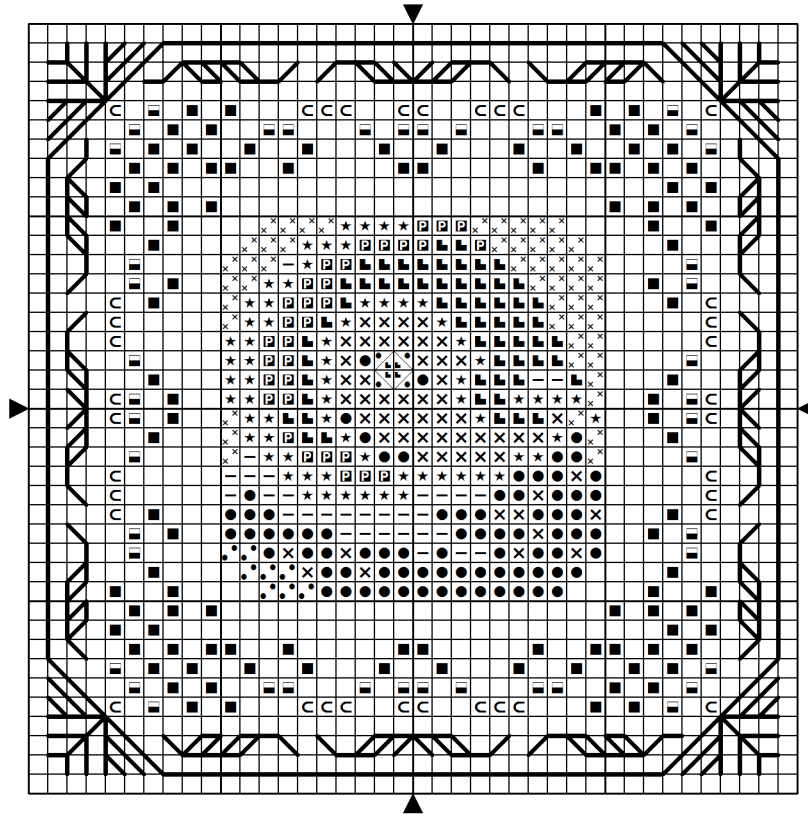
Use a Fabric Calculator to determine finished size on your favorite fabric.

Use 2 strands over 2 threads for regular stitches, and 1 strand for Backstitching.

Note: There are Fractional Stitches present on the Eye.

2 Symbols in the same square (on background) represent Half Stitches.

Backstitch Color: Border: 895.



DMC Symbol Chart

| Sym | No. | Colour Name | Sym | No. | Colour Name |
|-----|-----|--------------|-----|------|----------------|
| ■ | 310 | Black | × | 5200 | B Bright white |
| ● | 762 | : Pearl grey | — | 415 | : Chrome grey |
| ★ | 318 | Granite grey | □ | 317 | Steel grey |
| C | 666 | Bright red | ■ | 321 | Red |
| ■ | 304 | China red | | | |

Materials List

To stitch The Little Penguin Ornament, you will need DMC Floss: 304, 310 (Black), 317, 318, 321, 415, 666, 762, 5200 (Bright White).