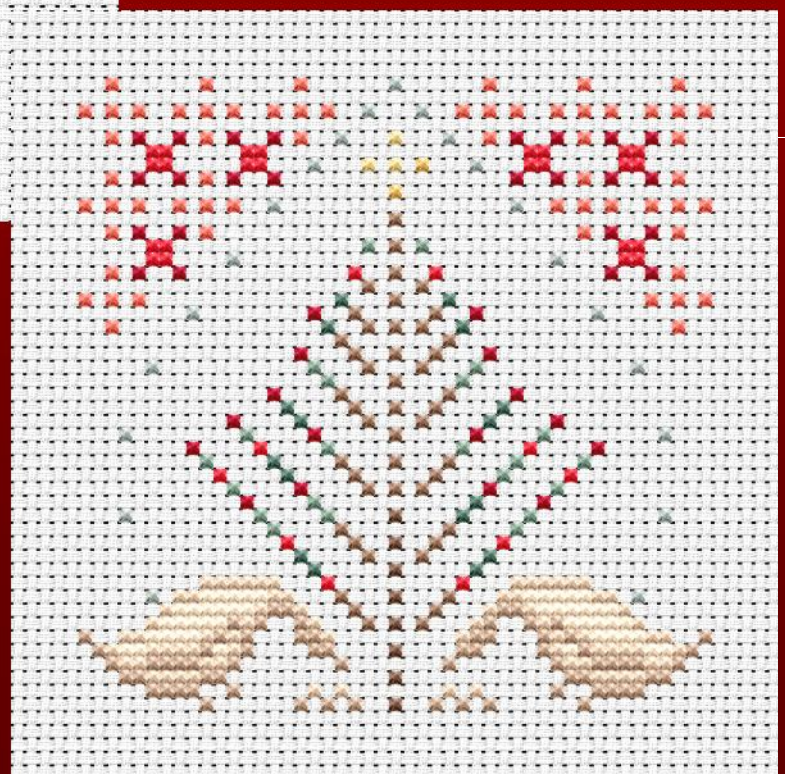


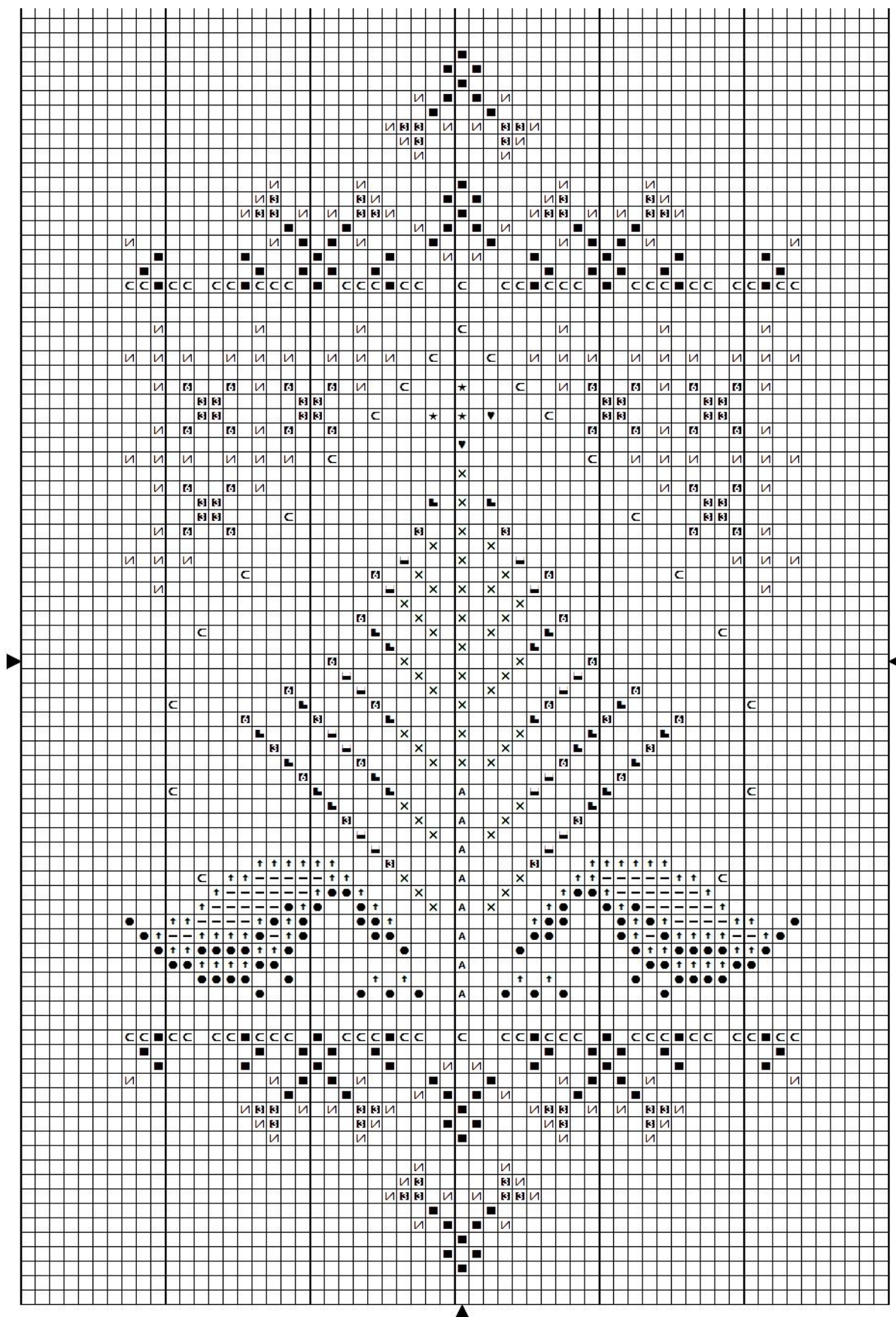
*“GRAZING”
CROSS STITCH
SAMPLER
AND
ORNAMENT*

Complimentary Design Set by Linen Flowers
© 2023 Angie Scovel
<http://linenflowers.com>





LINEN FLOWERS





LINEN FLOWERS

Sampler Information:

Design size: 47 w x 85 h.

Use a Fabric Calculator to determine finished size on your favorite fabric.

Use 2 strands of thread for all regular stitches.

DMC Symbol Chart Below.

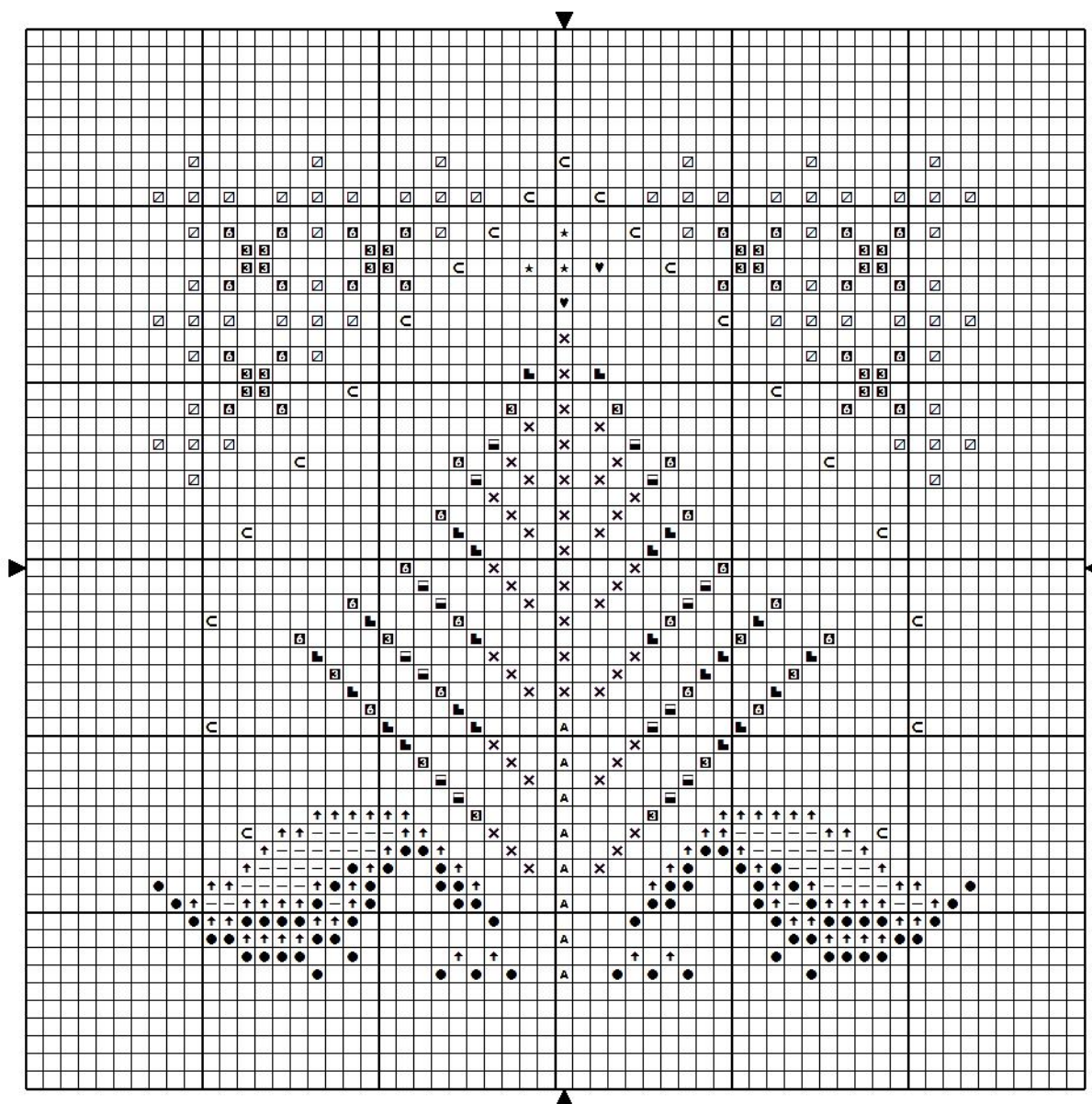
<u>Sym</u>	<u>No.</u>	<u>Colour Name</u>	<u>Sym</u>	<u>No.</u>	<u>Colour Name</u>
└	503	Thyme green	♥	676	Savannah gold
★	677	Sand gold	×	841	Deer brown
⋈	928	Light pearl grey	—	3770	Pale eggshell cream
↑	543	Shell beige	■	926	Grey green
●	842	Beige rope	A	840	Hare brown
▣	502	Blue green	Ⓜ	321	Red
Ⓜ	3801	Tulip red	☑	352	Salmon














Materials List:

To stitch The Grazing Sampler, you will need DMC Floss: 321, 352, 502, 503, 543, 676, 677, 840, 841, 842, 926, 928, 3770, 3801.

To stitch The Grazing Ornament, you will need DMC Floss: 321, 352, 502, 503, 543, 676, 677, 840, 841, 842, 928, 3770, 3801.

Use 2 strands of thread for all regular stitches.



<u>Sym</u>	<u>No.</u>	<u>Colour Name</u>	<u>Sym</u>	<u>No.</u>	<u>Colour Name</u>
	503	Thyme green		676	Savannah gold
	677	Sand gold		841	Deer brown
	928	Light pearl grey		3770	Pale eggshell cream
	543	Shell beige		842	Beige rope
	840	Hare brown		502	Blue green
	321	Red		3801	Tulip red
	352	Salmon			