



## Christmas Joy



Complimentary Pattern By Linen Flowers  
© 2013 Angie Kowalsky  
Website: <http://linenflowers.com>

LINEN FLOWERS

Design size: 35 w x 35 h.

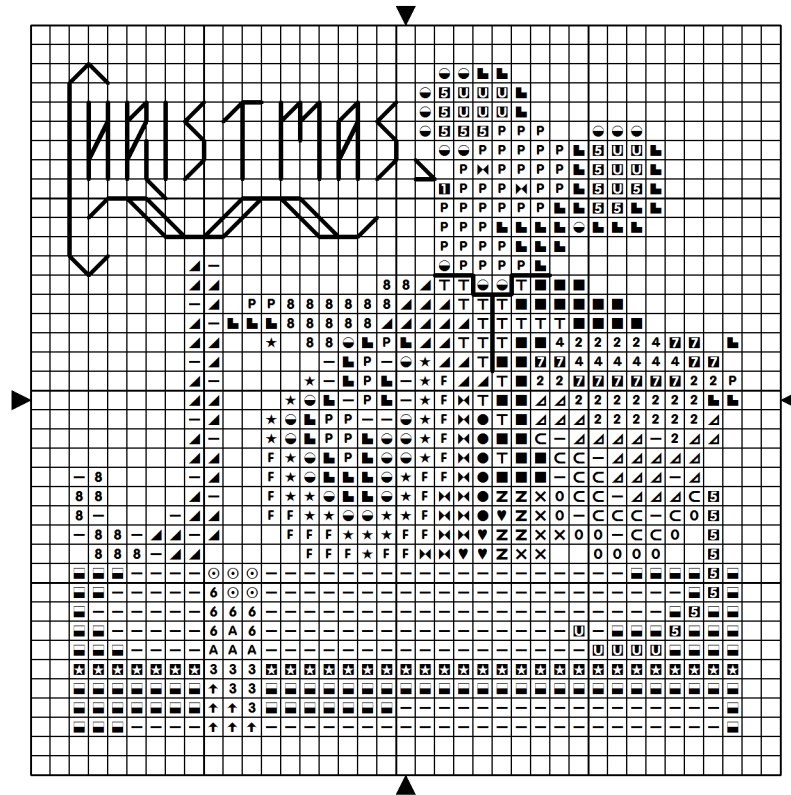
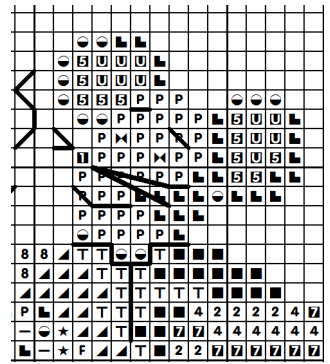
Use a Fabric Calculator to determine finished size on your favorite fabric.

Use 2 strands over 2 threads for regular stitches, and 1 strand for

Backstitching.

Backstitch Colors: Sweater: 5200 (Bright White), Text: 666, Face: 310 (Black).

DMC Symbol Chart Below.



LINEN FLOWERS

Sym	No.	Colour Name	Sym	No.	Colour Name
P	739	Dune cream	L	437	Camel
X	433	Chocolate brown	●	801	Mink brown
F	434	Cigar brown	★	435	Tabacco brown
○	436	Teddy brown	—	5200	B Bright white
T	321	Red	▲	666	Bright red
■	304	China red	8	3801	Tulip red
2	3850	Emerald green	▲	3851	Bright green
C	563	Celadon green	0	564	Light malachite green
7	3847	Deep teal green	4	3848	Medium teal green
5	3716	Candyfloss pink	■	310	Black
U	963	Pale dusty rose	X	517	Dark wedgewood blue
3	3818	Pine tree green	↑	909	Dark Emerald Green
A	910	Dark emerald green	■	3756	Cloud blue
○	912	Peppermint green	6	911	Golf green
⊠	762	Pearl grey	Z	3760	Fjord blue
♥	518	Light wedgewood blue			

To stitch Christmas Joy, you will need DMC Floss: 304, 310 (Black), 321, 433, 434, 435, 436, 437, 517, 518, 563, 564, 666, 739, 762, 801, 909, 910, 911, 912, 963, 3716, 3756, 3760, 3801, 3818, 3847, 3848, 3850, 3851, 5200 (Bright White).