

# Apple Slices

© 2010 Angie Kowalsky

Linen Flowers Designs

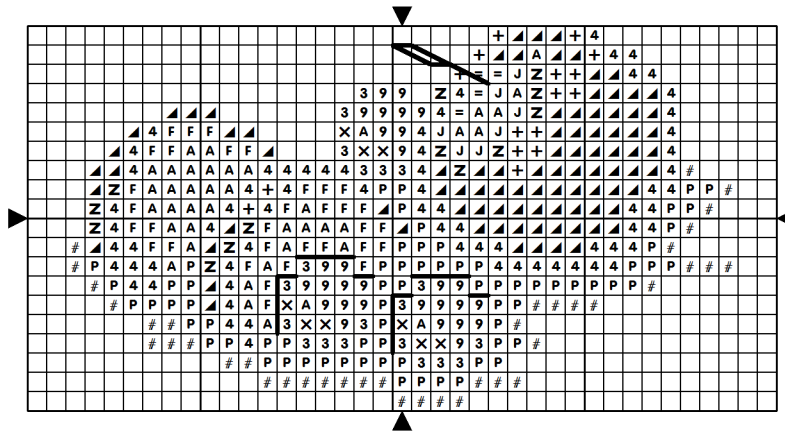
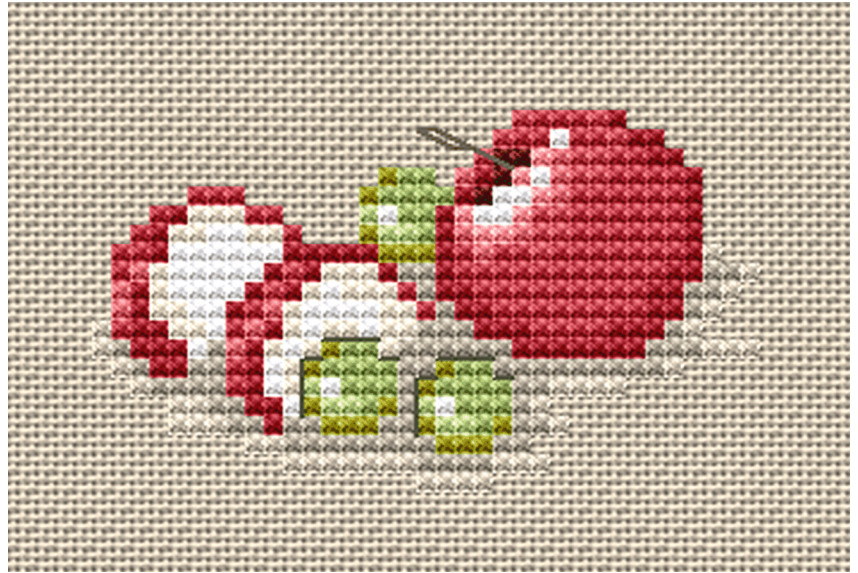
<http://linenflowers.com>

Design size:

35 w x 20 h.

Use 2 strands over 2 threads for regular stitches, and 1 strand for backstitching. Backstitch colors:

Grapes: 3051. Stem: 611.



## DMC Symbol Chart Below

Sym	No.	Colour Name	Sym	No.	Colour Name
+	3712	Blush pink	Z	760	Grenadine pink
▲	3328	Dark salmon	4	347	Egyptian red
A	5200	B Bright white	F	712	Cream
X	772	Celery green	9	3348	Lettuce heart green
3	166	Moss green	#	3866	: Garlic cream
P	3024	: Pale steel grey	=	814	: Deep wine red
J	761	Sunrise rose			



L I N E N F L O W E R S